

CLEANING, SEALING & AFTERCARE

Portland Limestone

The following is a cleaning and sealing guide for your Portland Stone floor tiles. The products and methods specified are a guide to help ensure that stone surfaces will remain protected and easy to clean for many years.



Cleaning

01. CONDITIONING BEFORE SEALING



SARSEN HOME DEEP CLEAN

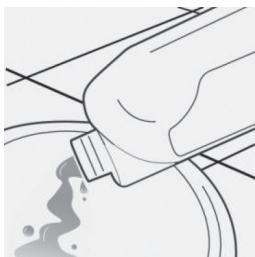
Sarsen Home Deep Clean is a high performance product for stripping and cleaning of vitrified glazed ceramics, porcelain, travertine, natural stone, sandstone, slate, marble, granite, terracotta, encaustics, quarry, brick, concrete, external paving, terrazzo and other mineral floors and walls. On larger areas scrubber drier machines can be used. This product will also work extremely well to clean up dirty grout joints. For more information refer to the technical data sheets.

APPLICATION	1ltr	5ltr	25ltr
Surface Cleaning	60m ² Per Bottle	N/A	N/A
Deep Stripping	30m ² Per Bottle	N/A	N/A
In Extreme Cases	15m ² Per Bottle	N/A	N/A

TECHNICAL FEATURES

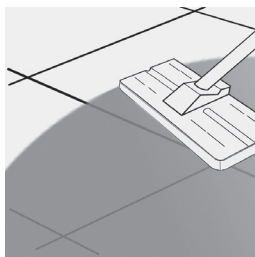
- Non hazardous
- High performance
- Fast acting
- Easy to use
- Walls & floors
- Interior & exterior use
- Deep cleaning

DIRECTIONS FOR USE:



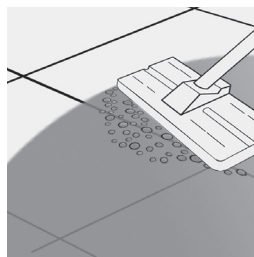
STEP 1.

Dilute solution 1 : 3 with cool water.



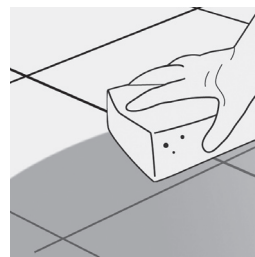
STEP 2.

Working in manageable areas at a time when applying the solution to the surface. Leave for 15 minutes.



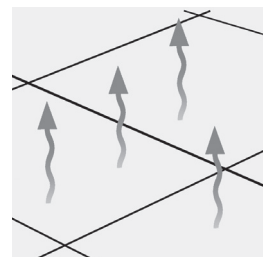
STEP 3.

Scrub surfaces and grout joints using a white emulsifying pad to release the dirt and grime.



STEP 4.

Sponge up or extract released residues. Rinse with water a second time and extract again.



STEP 5.

Allow surfaces to dry before allowing traffic or sealing.

This information is offered without guarantee. The material should be used so as to take account of the local conditions and the surfaces to be treated. In case of doubt, the product should be tried out in an inconspicuous area

Portland Limestone

FURTHER INFORMATION

INTENSIVE CLEANING

After applying the cleaning solution work in teams of two. One should agitate the surface. The other should use the sponge for immediate extraction. This will prevent released residues re-absorbing into the surface and greatly reduce the drying time of surfaces.

Try to work in manageable areas at a time and make sure to rinse well with plenty of water after each application. Rinsing should be repeated at least 2 times after cleaning. In areas where the staining is deep repeat the process until all of the stains have gone.

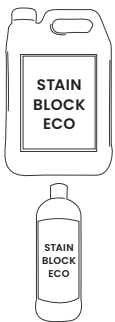
USEFUL EQUIPMENT

4pc pole, pad holder, white pad, buckets, sponges, absorbent towels (for spillage control), Plastic film and masking tape for covering and protecting any surfaces not to be cleaned. Mop and bucket for rinsing.

Ensure that any sensitive surfaces not to be cleaned are properly covered and protected before beginning. Ensure that gloves and eye protection and suitable clothing are worn. If potable water is used for rinsing we would suggest changing the water after every 5m².

Sealing

02. PROTECTING THE STONE AFTER CLEANING



SARSEN HOME STAINBLOCK ECO

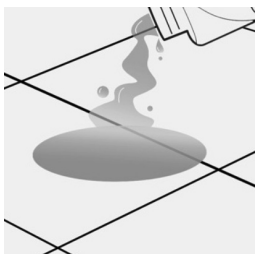
A water based impregnating sealer. Dries to leave surfaces with a delicately enhanced natural finish. Helps protect against staining. Treated surfaces strongly repel water, oil and grease. This product allows surfaces to breathe. Ideal for protecting porous surfaces that do not have a damp proof course. This product is non film forming. Ideal for use as a pre-treatment before finishing surfaces with Sarsen Home Stone Shield. For more information refer to the technical data sheets.

APPLICATION	500ml	1ltr	5lt
Low porosity surfaces	N/A	15m ² Per coat	75m ² Per coat
Higher porosity surfaces	N/A	5m ² Per coat	25m ² Per coat
Polished surfaces	N/A	30m ² Per coat	150m ² Per coat

TECHNICAL FEATURES

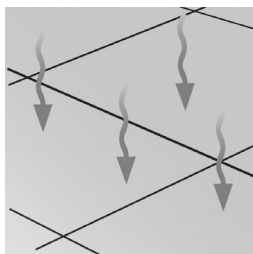
- Water based
- High performance
- Natural finish
- Easy to apply
- Interior & exterior use
- Breathable

DIRECTIONS FOR USE:



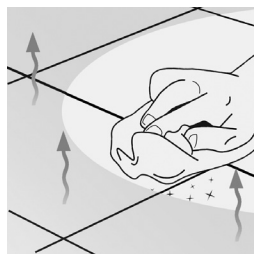
STEP 1.

Under floor heating should be off. Apply sealer to the surface of the tile and spread out evenly using a sealant applicator.



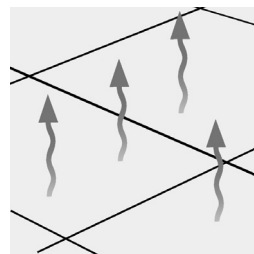
STEP 2.

Allow sealer to absorb naturally.



STEP 3.

45 minutes after applying the sealer dry buff the surface using a microfibre cloth to finish.



STEP 4.

Repeat this process until the tiles are completely saturated. Leave to dry naturally.



STEP 5.

Newly sealed surfaces should be left to dry for a minimum of 12 hours before allowing heavy traffic.

This information is offered without guarantee. The material should be used so as to take account of the local conditions and the surfaces to be treated. In case of doubt, the product should be tried out in an inconspicuous area

Portland Limestone

Sealing continued

03. FINISHING THE SURFACE EASIER TO MAINTAIN



SARSEN HOME STONE SHIELD

A low maintenance film forming sealer for use on pre-sealed porous natural stone and encaustics. Ideal for use on low porosity surfaces such as glazed ceramic, unpolished porcelain and vitrified quarry tiles. Protects and embellishes the surface. Highly resistant to wear and stains. Facilitates cleaning and aftercare.

APPLICATION	1ltr	5ltr	25ltr
Low porosity surfaces	5m ² Per coat	75m ² Per coat	375m ² Per coat

TECHNICAL FEATURES

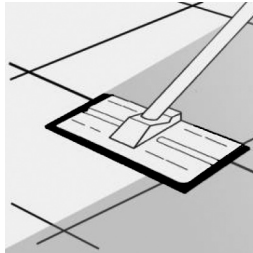
- Non hazardous
- High performance
- Satin finish
- Easy to apply
- Interior use
- Low odour VOC free

DIRECTIONS FOR USE:



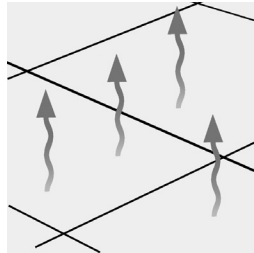
STEP 1.

Ensure surface to be treated is clean and as dry as possible before pouring the sealer onto the surface.



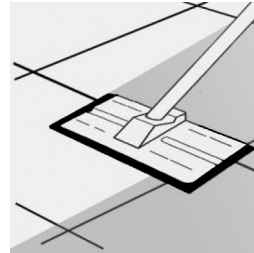
STEP 2.

Spread out evenly and thinly using a sealant applicator pad.



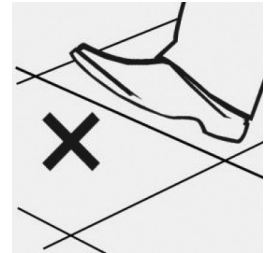
STEP 3.

Allow sealer to dry for a minimum of 45 minutes. Do not rub or buff the surface while it is drying.



STEP 4.

Apply further thin coats at hourly intervals until the desired finish has been achieved (max. 6) and leave to dry.



STEP 5.

Newly sealed and finished surfaces should be left to dry for a minimum of 12 hours before allowing traffic.

FURTHER INFORMATION

SEALING

Ensure that any surfaces not to be treated are properly covered and protected before beginning.

Stainblock and Stanblock Eco will delicately enhance making surfaces appear slightly darker following treatment.

Remove any excess sealer from the surface of the tiles 45 minutes after each application.

Stone Shield is a satin finish and will make surfaces appear darker following treatment.

Some areas may look patchy following application, especially if the sealer is applied to surfaces that are still slightly damp. This is caused by retained moisture. This is normal.

If the sealing products are to be used in areas where food is consumed: Once cured they are completely inert, so therefore considered to be food safe. In areas of high traffic it may be necessary to apply a top up coat of protection every 3–4 years. If Sarsen Home Clean & Sheen floor tile cleaner is used for the daily/ weekly aftercare then a top up coat can be applied without the need to strip the surface back.

This information is offered without guarantee. The material should be used so as to take account of the local conditions and the surfaces to be treated. In case of doubt, the product should be tried out in an inconspicuous area

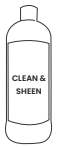
Portland Limestone

Aftercare

04. DAILY/WEEKLY CLEANING



CLEAN & SHEEN



SARSEN HOME CLEAN & SHEEN

A highly effective after care cleaner for natural stone, terracotta, encaustics, ceramic and porcelain. Cleans and protects in one application. Renovates dull looking floors. Regular use will also help to reinforce protection on surfaces finished with Sarsen Home Stone Shield. On unsealed surfaces this product cleans and gradually builds a slight sheen. Can also be used in scrubber drier machines. For more information refer to the technical data sheet.

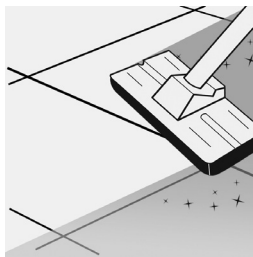
APPLICATION	1ltr	5ltr	25ltr
20m ² surface	40 washes aprox	200 washes aprox	N/A

TECHNICAL FEATURES	
<ul style="list-style-type: none"> • Environmentally friendly • PH Neutral • Phosphate free • Film forming 	<ul style="list-style-type: none"> • Commercial & domestic • Sealed and unsealed surfaces • Fresh clean fragrance • Interior & exterior use

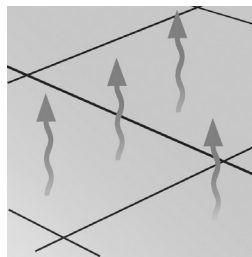
DIRECTIONS FOR USE:



STEP 1.
Dilute 1 capful of cleaner per litre of water.



STEP 2.
Mop surfaces with the solution.



STEP 3.
No need to rinse. Leave surfaces to dry.



STEP 4.
Keep off of surfaces until they are completely dry.

CONCENTRATED FORMULA UP TO 40 WASHES FROM 1 LITRE

FURTHER INFORMATION

AFTERCARE

One litre of product, when diluted correctly will provide up to 40 washes.

Always follow detailed instructions on the product labels.

Avoid using steam cleaners and strong alkali or acid based cleaning detergents on natural, sealed stone and tiles surfaces as they can compromise protection offered by protective treatments. As well as causing damage to the seal and the stone, many ordinary detergents can dry to leave phosphate deposits on the surface that gradually build up and when made wet can become very slippery.

Cleaning surfaces routinely with clean and sheen will remove daily dirt and grime and repair the seal where it has worn from abrasion everytime the surface is washed.

Neglected or grubby looking surfaces can be restored by intensively cleaning with Sarsen Home Deep Clean. Surfaces would require a top up coat of protection after any more intensive cleaning.

This information is offered without guarantee. The material should be used so as to take account of the local conditions and the surfaces to be treated. In case of doubt, the product should be tried out in an inconspicuous area